

**Klasse**  
**3 ABIZ**  
**Leadsheet08**

- 15 Sebastian
- 16 Michael Tr.
- 17 Lucas
- 18 Simone
- 20 Marco
- 21 Rahel
- 22 Raphael
- 23 Vanessa
- 24 Kimberly
- 25 Jasmin B.
- 26 Annina
- 27 Jessica
- 28 Sabine
- 29 Michael M.
- 30 Davide
- 31 Antoinette
- 32 Jasmin St.
- 33 (Pedro)
- 34 Andrea

**15 Titel**

**15 Sebastian**

Leadsheet Akkorde

3 ABIZ

$\text{♩} = 104$   
RockFunk

Sebastian 3 ABIZ

C F/C G/C G/C C C F/C G/C G/C C

Fadd<sup>9</sup> C/E Dm Am F G<sup>4</sup> G C Fine

Am/F Am/F# G<sup>4</sup> G G<sup>7b5</sup>

Am Am/G Am/F# C/G G D.C.

C F/C G/C G/C C C F/C G/C G/C C

Fadd<sup>9</sup> C/E Dm Am F G<sup>4</sup> G C

Am/F Am/F# G<sup>4</sup> G G<sup>7b5</sup>

Am Am/G Am/F# C/G G

# 16 Titel

# 16 Michael Tr.

Leadsheet Akkorde

3 ABIZ

♩ = 69

Michael Tr. 3 ABIZ

Classic (Johann Pachelbel)

C G Am Em

F C D G

C<sup>6</sup> G Am Em F C D G

C<sup>6</sup>

C

Am G F G

C B<sup>1</sup> C Em

F G Am

F G Am

F G Em

# 17 Titel

## Lucas 3 ABIZ

♩ = 80

(Distorsion) Guitar Style

C F/A C/G G<sup>2</sup> C F/A G<sup>4</sup> G

C F/A C/G G<sup>2</sup> C F/A G<sup>4</sup> G

C F/C C G/C C G/C F/C G/C C F/C C F/C F/G G

C F/C C G/C C G/C F/C G/C C F/C C F/C F/G G

## 17 Lucas

Leadsheet Akkorde

3 ABIZ

C F/A C/G G<sup>2</sup> C F/A G<sup>4</sup> G

C F/C C G/C C G/C F/C G/C C F/C C F/C F/G G

# 18 Titel

♩. = 50

Piano Ballade

Simone 3 ABIZ

Am Dm Am E Dm

E<sup>sus 4</sup> E Am Dm Am E

Hm<sup>7b5</sup> Am/E<sup>7</sup> F Am/E<sup>7</sup> E<sup>7</sup> A

D<sup>add9</sup> A<sup>add9</sup> E<sup>sus 4</sup> E D<sup>add9</sup> A<sup>add9</sup>

Hm<sup>7b5</sup> A/C<sup>7</sup> Hm<sup>7b5</sup>/D<sup>7</sup> Am/E<sup>7</sup> E<sup>7</sup> Am

Am Dm Am E Dm F E<sup>4</sup> E

Am Dm Am E Hm<sup>7b5</sup> Am/E<sup>7</sup> E<sup>7</sup> F F

Am/E<sup>7</sup> E<sup>7</sup> A D<sup>2</sup> A<sup>2</sup> E<sup>4</sup> E

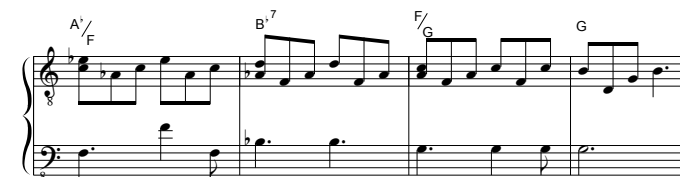
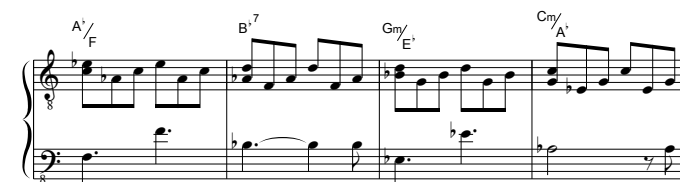
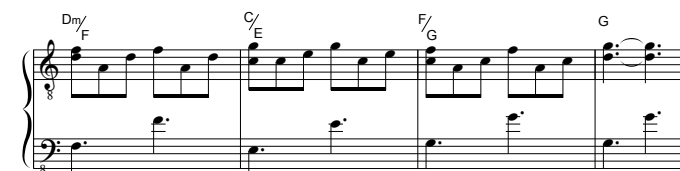
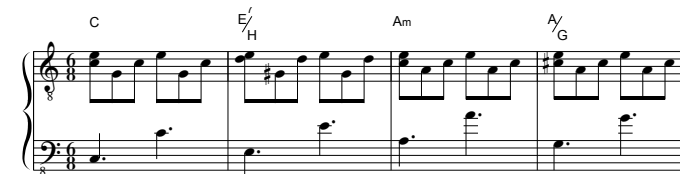
D A Hm<sup>7b5</sup> A/C<sup>7</sup> Hm<sup>7b5</sup>/D<sup>7</sup> Am/E<sup>7</sup> E<sup>7</sup> Am

# 19 Titel



Swing

Anna 3ABIZ



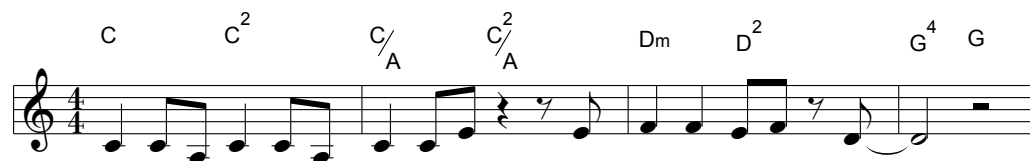
## 20 Titel

Marco 3 ABIZ

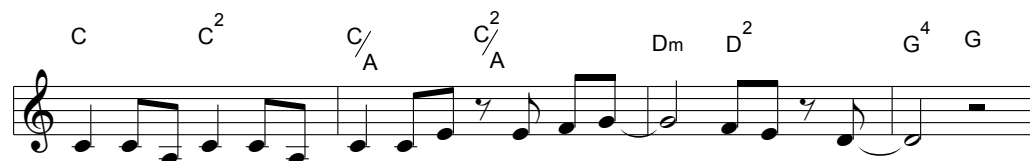
 = 88

Reggea

C C<sup>2</sup> C/A C<sup>2</sup>/A Dm D<sup>2</sup> G<sup>4</sup> G



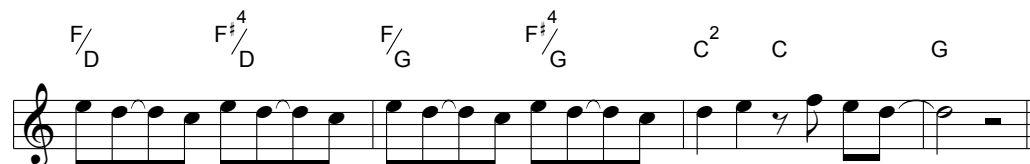
C C<sup>2</sup> C/A C<sup>2</sup>/A Dm D<sup>2</sup> G<sup>4</sup> G



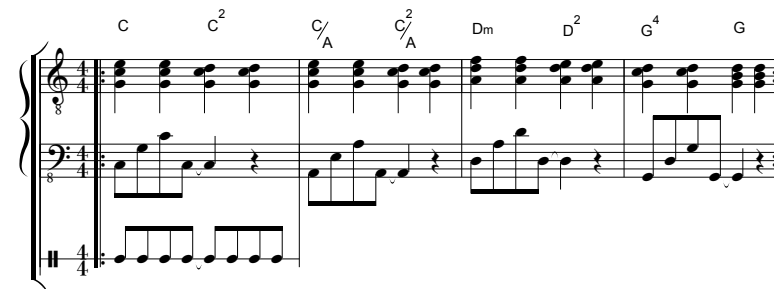
Am A<sup>2</sup> A<sup>4</sup> Am F F<sup>4</sup> Dm/F F F/E



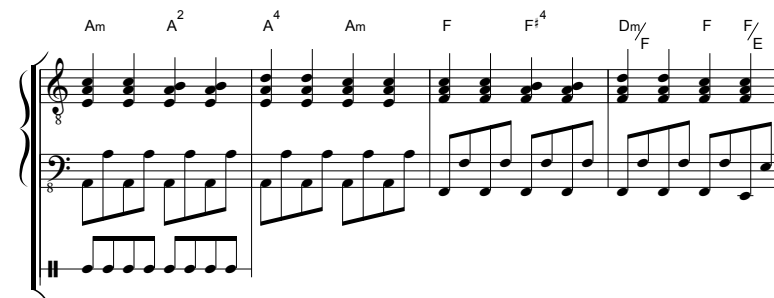
F/D F<sup>4</sup>/D F/G F<sup>4</sup>/G C<sup>2</sup> C G



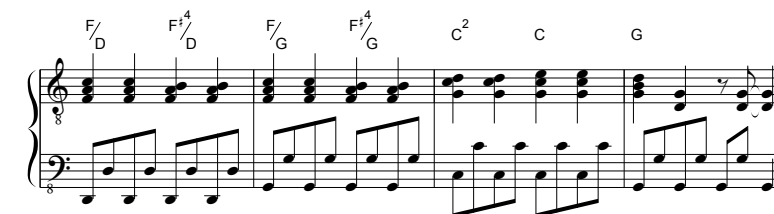
C C<sup>2</sup> C/A C<sup>2</sup>/A Dm D<sup>2</sup> G<sup>4</sup> G



Am A<sup>2</sup> A<sup>4</sup> Am F F<sup>4</sup> Dm/F F F/E



F/D F<sup>4</sup>/D F/G F<sup>4</sup>/G C<sup>2</sup> C G



# 21 Titel

Rahel ABIZ

 = 132

Tango



F Am G/H C

Dm F C Am Em F G

A<sup>b</sup> B<sup>b</sup> C A<sup>b</sup> B<sup>b</sup> C

A<sup>b</sup> B<sup>b</sup> C Em F G<sup>4</sup> G

E<sup>7</sup>/G<sup>b</sup> Am G<sup>7</sup>/H C

A<sup>7</sup>/C<sup>b</sup> Dm Dm/F C/G G<sup>7</sup> Am

A<sup>7</sup>/C<sup>b</sup> Dm Dm/F C/G G<sup>7</sup> C

# 21 Rahel

Leadsheet Akkorde

3 ABIZ



F Am G/H C Dm F C Am Em F G

A<sup>b</sup> B<sup>b</sup> C A<sup>b</sup> B<sup>b</sup> C A<sup>b</sup> B<sup>b</sup> C Em F G<sup>4</sup> G

E<sup>7</sup>/G<sup>b</sup> Am G<sup>7</sup>/H C A<sup>7</sup>/C<sup>b</sup> Dm Dm/F C/G G<sup>7</sup> Am

A<sup>7</sup>/C<sup>b</sup> Dm Dm/F C/G G<sup>7</sup> C

# 22 Titel

3 ABIZ

## Raphael 3 ABIZ

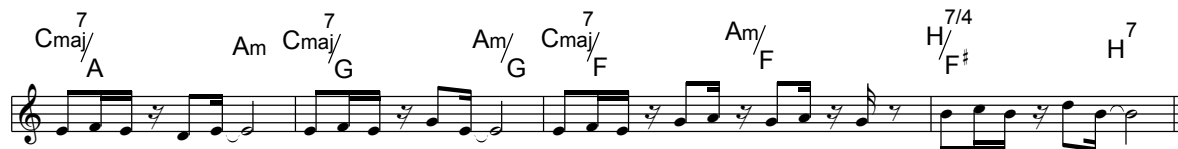
♩=62

Bossa Nova

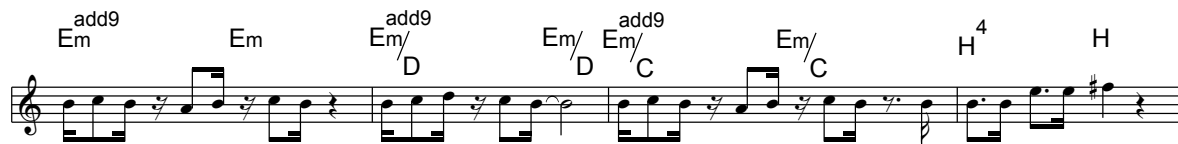
Cmaj<sup>7</sup> Am/C C/F Am/F Cmaj<sup>7</sup> Fmaj<sup>7</sup>



Cmaj<sup>7</sup>/A Am Cmaj<sup>7</sup>/G Am/G Cmaj<sup>7</sup>/F Am/F H<sup>7/4</sup>/F# H<sup>7</sup>



Em<sup>add9</sup> Em Em<sup>add9</sup>/D Em<sup>add9</sup>/D Em<sup>add9</sup>/C H<sup>4</sup> H



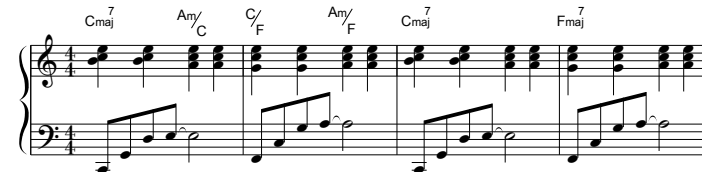
Em<sup>add9</sup> Em Em<sup>7</sup>/A C/A D<sup>7/4</sup> C/D D<sup>9</sup>



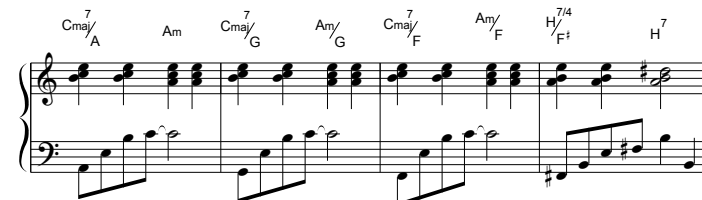
G<sup>4</sup> G



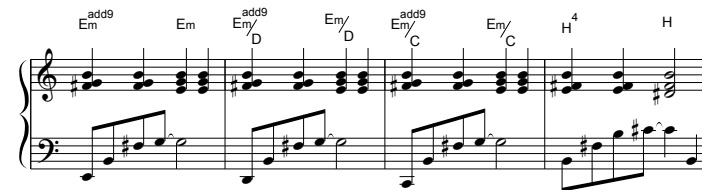
Cmaj<sup>7</sup> Am/C C/F Am/F Cmaj<sup>7</sup> Fmaj<sup>7</sup>



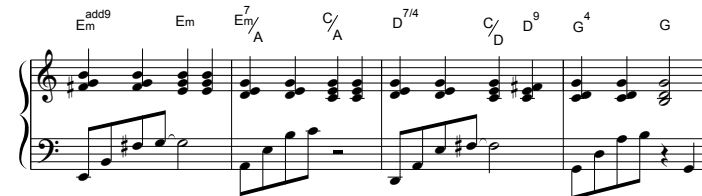
Cmaj<sup>7</sup>/A Am Cmaj<sup>7</sup>/G Am/G Cmaj<sup>7</sup>/F Am/F H<sup>7/4</sup>/F# H<sup>7</sup>



Em<sup>add9</sup> Em Em<sup>add9</sup>/D Em/D Em<sup>add9</sup>/C Em/C H<sup>4</sup> H



Em<sup>add9</sup> Em Em<sup>7</sup>/A C/A D<sup>7/4</sup> C/D D<sup>9</sup> G<sup>4</sup> G





23\_Vanessa

Leadsheet Akkorde

3 ABIZ

23\_Titel

♩ = 110

Vanessa 3 ABIZ

Synthi Rock

Musical notation for the title '23\_Titel'. It consists of five staves of music in 4/4 time. The first staff shows a melodic line with various chords above it: C, C/F, C/D, C/G, C/Gmaj7, C, C/F, C/D, C/G, C/Gmaj7. The second staff shows a similar melodic line with chords: C, C/F, C/D, C/G, C/Gmaj7, C, C/F, C/D, C/G, C/Gmaj7. The third staff shows a bass line with chords: Am7, Dm7, G7, Cmaj7. The fourth staff shows a bass line with chords: Am7, Dm7, G7, Cmaj7. The fifth staff shows a bass line with chords: Fmaj7, Hm7b5, E7, E, C/F, C/G, Cmaj7/G.

Musical notation for the first system of '23\_Vanessa'. It consists of two staves of music in 4/4 time. The first staff shows a melodic line with chords: C, C/F, C/D, C/G, C/Gmaj7, C, C/F, C/D, C/G, G/G. The second staff shows a bass line with chords: C, C/F, C/D, C/G, G/G, C, C/F, C/D, C/G, C/Gmaj7.

Musical notation for the second system of '23\_Vanessa'. It consists of two staves of music in 4/4 time. The first staff shows a melodic line with chords: C, C/F, C/D, C/G, G/G, C, C/F, C/D, C/G, C/Gmaj7. The second staff shows a bass line with chords: C, C/F, C/D, C/G, G/G, C, C/F, C/D, C/G, C/Gmaj7.

Musical notation for the third system of '23\_Vanessa'. It consists of two staves of music in 4/4 time. The first staff shows a melodic line with chords: Am7, Dm7, G7, Cmaj7. The second staff shows a bass line with chords: Am7, Dm7, G7, Cmaj7.

Musical notation for the fourth system of '23\_Vanessa'. It consists of two staves of music in 4/4 time. The first staff shows a melodic line with chords: Fmaj7, Hm7b5, E7, E, C/F, C/G, Cmaj7/G. The second staff shows a bass line with chords: Fmaj7, Hm7b5, E7, E, C/F, C/G, Cmaj7/G.

24 Titel

Kimberly 3 ABIZ

 = 102

8 Beat

Lead sheet for Kimberly 3 ABIZ, 8 beats. The music is in 4/4 time. The first system contains four measures with chords C and F/C. The second system contains four measures with chords F, B<sup>b</sup>/F, C, and F/C. The third system contains four measures with chords F/G, G, F/G, G, C, F/C, and F<sup>9</sup>add/G.

24 Kimberly

Leadsheet Akkorde

3 ABIZ

Lead sheet for Kimberly 3 ABIZ, 8 beats. The music is in 4/4 time. The first system contains four measures with chords C and F/C. The second system contains four measures with chords F, B<sup>b</sup>/F, C, and F/C. The third system contains four measures with chords F/G, G, F/G, G, C, F/C, and F<sup>9</sup>add/G. The sheet includes piano accompaniment for the first and second systems.

# 25 Jasmin B.

Leadsheet Akkorde

## 25 Titel

Jasmin B. 3 ABIZ

♩ = 100

Reggae

Musical notation for the vocal line of '25 Titel'. The piece is in 4/4 time. The melody consists of eighth and quarter notes. The lyrics '25 Titel' are written below the notes. The key signature has one flat (Bb).

Piano accompaniment for '25 Titel'. The piece is in 4/4 time. The accompaniment features a steady bass line and chords in the right hand. The key signature has one flat (Bb). The tempo is 100 beats per minute. The style is Reggae. The lyrics '25 Titel' are written above the first system of the piano part.

26 Titel

Annina 3 ABIZ

$\text{♩} = 177$

Salsa

Musical score for '26 Titel' in 4/4 time, Salsa style. The score consists of six systems of two staves each (treble and bass clef). The key signature has one sharp (F#). The tempo is marked as 177 bpm. The score includes various chords and melodic lines. Chords are labeled above the treble staff and below the bass staff.

Chords: C, Am, C/G, G/F, C/E, Dm/F, G, F, C/E, Dm, B<sup>b</sup>, F/A, D<sup>7</sup>/A, G, G/F.

Musical score for '26 Annina' in 4/4 time, Leadsheet Akkorde style. The score consists of six systems of two staves each (treble and bass clef). The key signature has one sharp (F#). The score includes various chords and melodic lines. Chords are labeled above the treble staff and below the bass staff.

Chords: C, Am, C/G, G/F, C/E, Dm/F, C/G, G, F, C/E, Dm, B<sup>b</sup>, F/A, D<sup>7</sup>/A, G, G/F.

27 Titel

$\text{♩} = 63$

Jessica 3 ABIZ

Bolero

Musical notation for the first staff of the Bolero section, showing a treble clef, 3/4 time signature, and a melodic line with chords G, Dm, F, and C/E.

Musical notation for the second staff of the Bolero section, showing a treble clef, 3/4 time signature, and a melodic line with chords Am, Em/G, Am/F#, and Am/F.

Musical notation for the third staff of the Bolero section, showing a treble clef, 3/4 time signature, and a melodic line with chords C, G/H, Gm/Bb, D7/A, and D7/D.C.

Piano accompaniment for the first system of the Bolero section, showing a grand staff with chords G, Dm, F, and C/E.

Piano accompaniment for the second system of the Bolero section, showing a grand staff with chords G, Dm, F, and C/E.

Piano accompaniment for the third system of the Bolero section, showing a grand staff with chords Am, Em/G, Am/F#, and Am/F.

Piano accompaniment for the fourth system of the Bolero section, showing a grand staff with chords C, G/H, Gm/Bb, D7/A, and D7.

Piano accompaniment for the first system of the Jessica section, showing a grand staff with chords G, Dm, F, and C/E.

Piano accompaniment for the second system of the Jessica section, showing a grand staff with chords G, Dm, F, and C/E.

Piano accompaniment for the third system of the Jessica section, showing a grand staff with chords Am, Em/G, Am/F#, and Am/F.

Piano accompaniment for the fourth system of the Jessica section, showing a grand staff with chords C, G/H, Gm/Bb, D7/A, and D7.

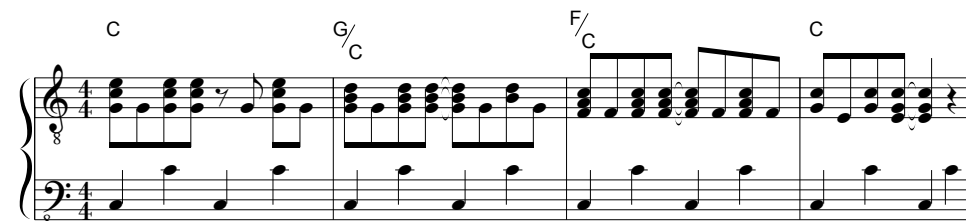
# 28 Sabine

Leadsheet Akkorde

3 ABIZ



C G/C F/C C



## 28 Titel



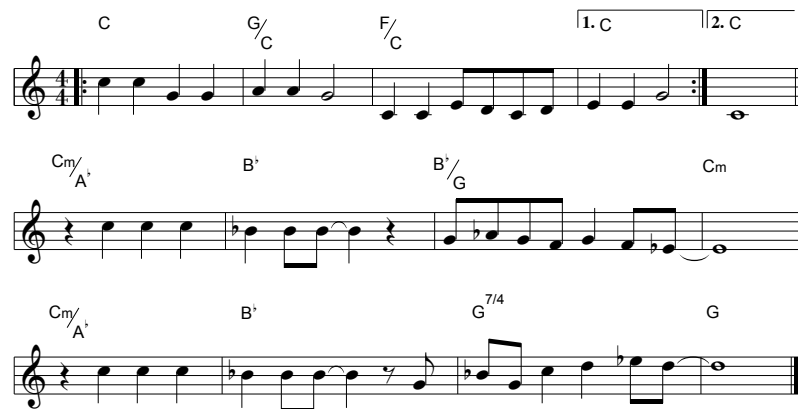
Sabine 3 ABIZ

Rock Shuffle

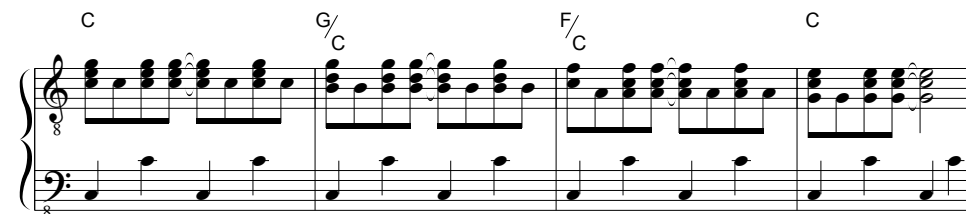
C G/C F/C 1. C 2. C

Cm/A<sup>+</sup> B<sup>+</sup> B<sup>+</sup>/G Cm

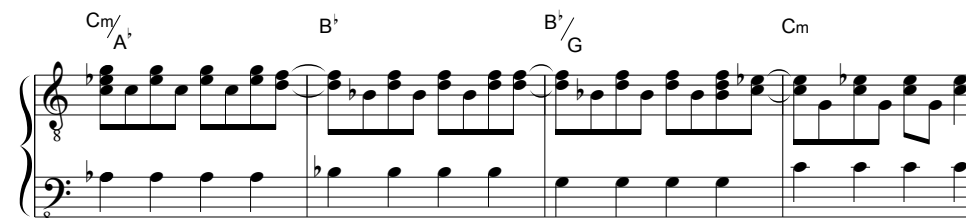
Cm/A<sup>+</sup> B<sup>+</sup> G<sup>7/4</sup> G



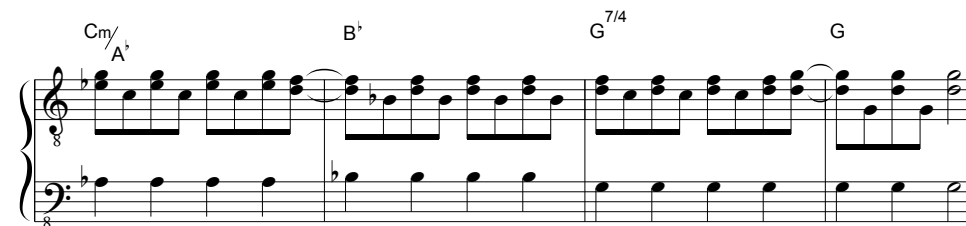
C G/C F/C C



Cm/A<sup>+</sup> B<sup>+</sup> B<sup>+</sup>/G Cm



Cm/A<sup>+</sup> B<sup>+</sup> G<sup>7/4</sup> G



29 Titel

♩ = 80

Michael M. 3 ABIZ

8 Beat Piano Style

Musical notation for the title "29 Titel" in 4/4 time, 8-beat piano style. The notation includes a melody line with two first endings and a second ending. Chords are indicated above the staff: F/C, G/C, C, F/C, G/C, C, C/B<sup>b</sup>, F/A, F/A, C/G, C/G.

Piano accompaniment for the first system of "29 Titel". The notation shows a rhythmic pattern in the right hand with chords F/C, G/C, C, F/C, G/C, C and a simple bass line in the left hand.

Piano accompaniment for the second system of "29 Titel". The notation continues the rhythmic pattern with chords F/C, G/C, C, F/C, G/C, C.

Piano accompaniment for the third system of "29 Titel". The notation features a more complex right-hand melody with chords C/B<sup>b</sup>, F/A, F/A, C/G.

Piano accompaniment for the fourth system of "29 Titel". The notation concludes the piece with chords C/B<sup>b</sup>, F/A, F<sup>m</sup>/A, C/G, G.

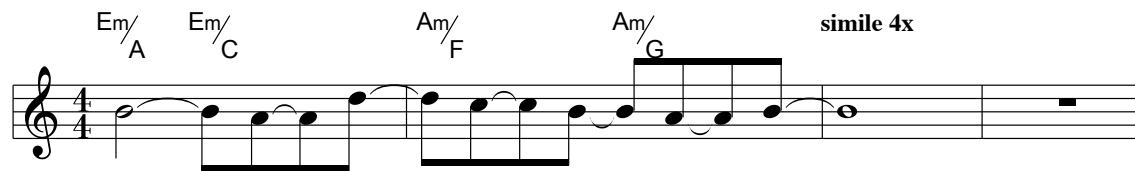
# 30 Titel

Davide 3 ABIZ

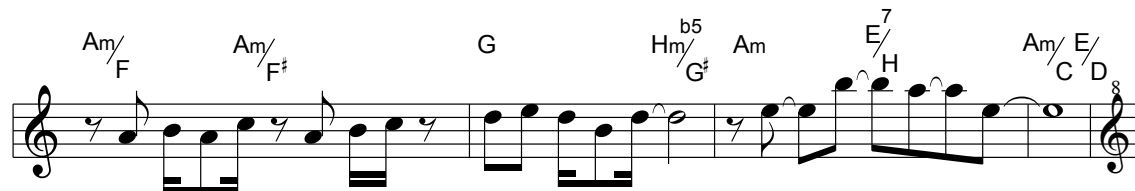
 =90

Acoustic Rock

Em/A Em/C Am/F Am/G simile 4x



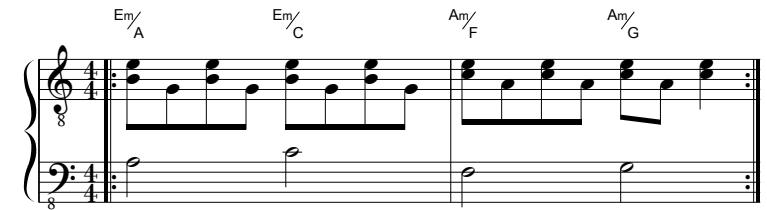
Am/F Am/F# G Hm/b5/G# Am E7/H Am/E/C/D



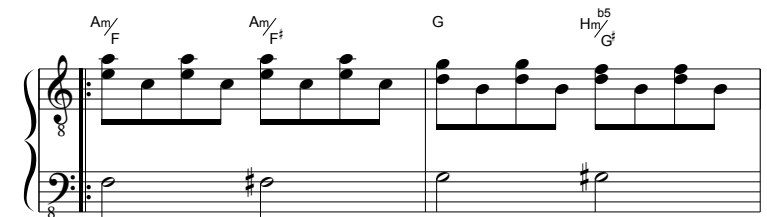
Am/F Am/F# G Hm/b5/G# Am E7/H Am/E/C/D



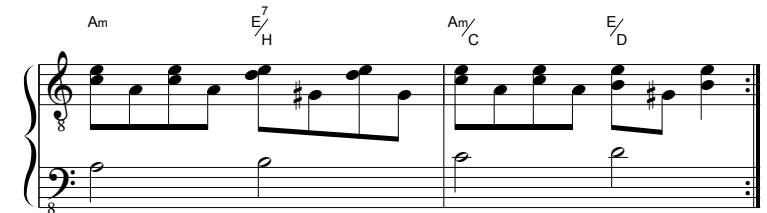
Em/A Em/C Am/F Am/G



Am/F Am/F# G Hm/b5/G#



Am E7/H Am/C E/D





# 31 Antoinette

Leadsheet Akkorde

3 ABIZ

## 31 Titel

Antoinette 3 ABIZ

=126

Dance

Melodic line with chords:

F G C G/H Am Am/G F C/E G<sup>4</sup>G

F G C G/H Am Am/G F C/G G<sup>7</sup> C

Fm Cm/G Hm<sup>b5</sup>/G A<sup>+</sup> Fm Cm/G Cm/G G<sup>7</sup> Cm

Fm Cm/G G<sup>7</sup> Am Dm/F C/G G<sup>7</sup> C

Chords: F G C G/H Am Am/G F C/E G<sup>4</sup> G

Chords: F G C G/H Am Am/G F C/G G<sup>7</sup> C

Chords: Fm Cm/G Hm<sup>b5</sup>/G A<sup>+</sup> Fm Cm/G Cm/G G<sup>7</sup> Cm

Chords: Fm Cm/G G<sup>7</sup> Am Dm/F C/G G<sup>7</sup> C

# 32 Titel

 =86

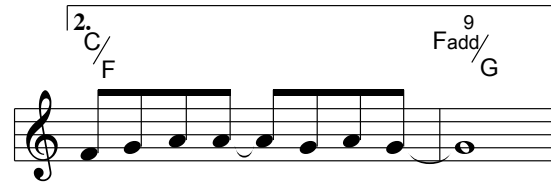
BritPop

Jasmin St. 3 ABIZ

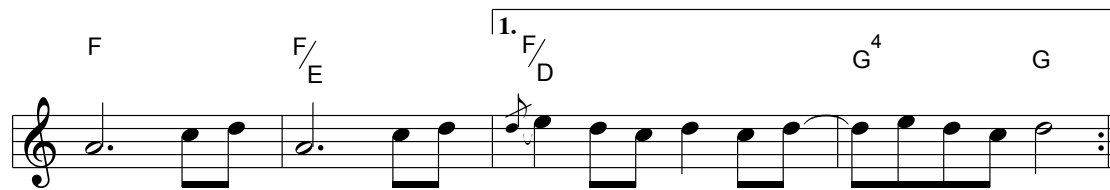
1. C C/A C/F C/G G



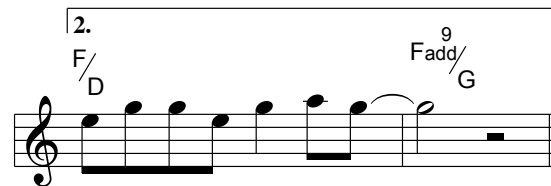
2. C/F Fadd<sup>9</sup>/G



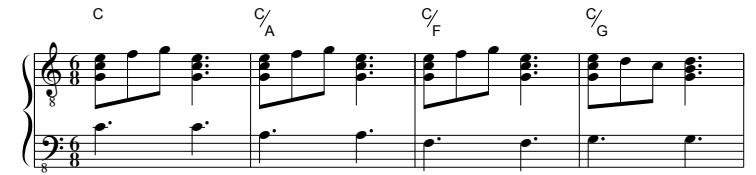
1. F F/E F/D G<sup>4</sup> G



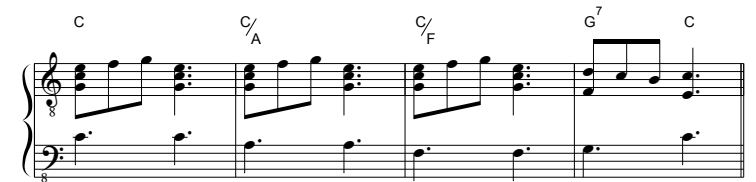
2. F/D Fadd<sup>9</sup>/G



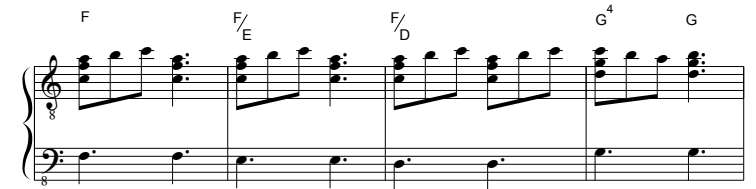
C C/A C/F C/G



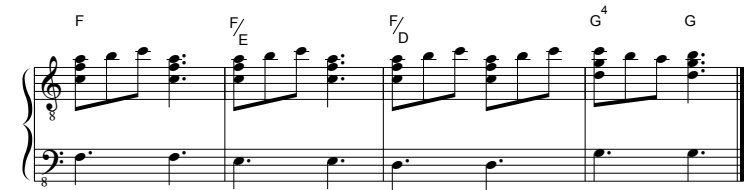
C C/A C/F G<sup>7</sup> C



F F/E F/D G<sup>4</sup> G



F F/E F/D G<sup>4</sup> G



# 34 Andrea

Andrea 3 ABIZ

♩ = 75

Pop Ballad

C Dm/C C Dm/C C/A G/A

F/A G/A Cm/A' B'/A' A' B'/A'

C/G F/G C/G F/G G

F C/E 1. F/D C

2. F/G Fadd<sup>9</sup>/G

# 34 Andrea

Leadsheet Akkorde

3 ABIZ

C Dm/C C Dm/C C/A G/A

F/A G/A Cm/A' B'/A' A' B'/A'

C/G F/G C/G F<sup>7</sup>G G F C/E

F/D C F C/E F/G Fadd<sup>9</sup>/G